

- NOTE:**
- Material and finish**
 Outer shell&Back nut: Copper alloy, Cr plating
 Contact: Copper alloy, Gold plating over Ni
 Insulator: PEEK UL94 V-1
 Gasket: Silicone
 Other parts: Copper alloy, Ni plating
 - Mechanical characteristics**
 Insertion Force: 40.0N MAX.
 Extraction Force: 40.0N MAX.
 Back nut torque: 2.0 N·m MAX.
 Endurance: 3000 mating cycles
 Vibration: 10-2000Hz , 15g comply with EIA-364-28
 Shock: 100g amplitude, half sine pulse of 3ms, no discontinuity > 1us EIA-364-27
 - Electrical specifications**
 Contact resistance: 8.7 mOhm MAX.
 After 3000 Cycles: 10 mOhm MAX.
 Insulation resistance: >100 Mohm
 Rated current: 2PIN 25.0A (Per Pin) 3PIN 17.0A (Per Pin)
 4PIN 15.0A (Per Pin) 5PIN 14.0A (Per Pin)
 6PIN 12.0A (Per Pin) 7PIN 11.0A (Per Pin)
 8PIN 10.0A (Per Pin) 10PIN 8.0A (Per Pin)
 12PIN 7.0A (Per Pin) 14PIN 6.5A (Per Pin)
 16PIN 6.0A (Per Pin) 18PIN 5.5A (Per Pin)
 19PIN 5.0A (Per Pin) 26PIN 2.0A (Per Pin)
 32PIN 1.5A (Per Pin)
 - Characteristics**
 Waterproof level: IP67 (Mating)
 Operating temperature: -55°C ~ + 200°C
 Corrosion resistance: 144 H salt mist, 5 % salt solution, 35°C
 Humidity: 21 days at 95% RH
 - Max wire size (AWG) :** #16 for 2pin #18 for 3pin
 #20 for 4~7pin #22 for 8&10pin
 #24 for 12~19pin #28 for 26&32pin
 - RoHS compliance**
 Part No.

X03 [7] R - F 2 T S * * 0 * C 1 * * *

CONTACT POS.
02-32=2pin-32pin

SHELL MATERIAL
0=Brass

CODE	CONTACT TYPE
2	Male Solder Contact
4	Female Solder Contact
C	Crimp Male Contact
M	Crimp Female Contact

COLLET NUT
1=Nut for fitting a bend relief

CODE	KEY ANGLES
0	0°
A	30°
*	**

CABLE OD
15=OD: 1.3mm-1.5mm
20=OD: 1.6mm-2.0mm
25=OD: 2.1mm-2.5mm
30=OD: 2.6mm-3.0mm
35=OD: 3.1mm-3.5mm
40=OD: 3.6mm-4.0mm
45=OD: 4.1mm-4.5mm
50=OD: 4.6mm-5.0mm
55=OD: 5.1mm-5.5mm
60=OD: 5.6mm-6.0mm
65=OD: 6.1mm-6.5mm
70=OD: 6.6mm-7.0mm
75=OD: 7.1mm-7.5mm
80=OD: 7.6mm-8.0mm
85=OD: 8.1mm-8.5mm

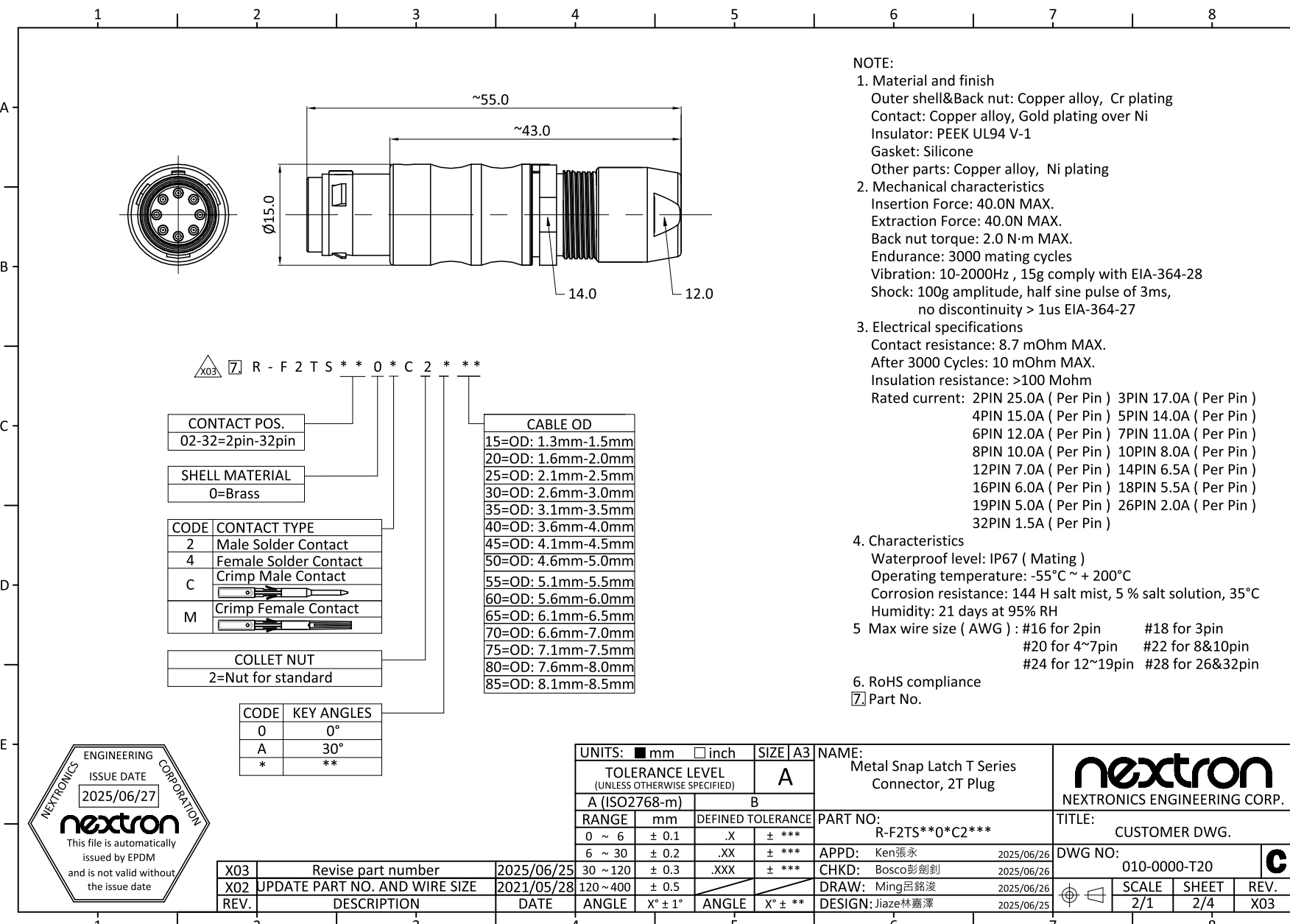


UNITS: <input checked="" type="checkbox"/> mm <input type="checkbox"/> inch	SIZE A3	NAME: Metal Snap Latch T Series Connector, 2T Plug	 NEXTRONICS ENGINEERING CORP.
TOLERANCE LEVEL (UNLESS OTHERWISE SPECIFIED)	A	PART NO: R-F2TS**0*C1***	
A (ISO2768-m)	B	APPD: Ken張永 2025/06/26	TITLE: CUSTOMER DWG.
RANGE mm	DEFINED TOLERANCE	CHKD: Bosco彭劍劍 2025/06/26	DWG NO: 010-0000-T20 C
0 ~ 6 ± 0.1	.X ± ***	DRAW: Ming呂銘凌 2025/06/26	SCALE SHEET REV.
6 ~ 30 ± 0.2	.XX ± ***	DESIGN: Jiaze林嘉澤 2025/06/25	2/1 1/4 X03
30 ~ 120 ± 0.3	.XXX ± ***		
120 ~ 400 ± 0.5			

REV.	DESCRIPTION	DATE
X03	Revise part number	2025/06/25
X02	UPDATE PART NO. AND WIRE SIZE	2021/05/28

CONFIDENTIAL: THIS DOCUMENT CONTAINED THE INFORMATION IS PROPRIETARY AND CONFIDENTIAL TO Nexttronics Engineering Corp. NO PERSON IS ALLOWED TO USE COPY, PUBLISH OR OTHERWISE DISCLOSE THE INFORMATION TO OTHERS, UNLESS BY THE PRIOR WRITTEN EXPRESS AUTHORIZATION OF Nexttronics Engineering Corp. (C)COPYRIGHT- Nexttronics Engineering Corp.

USE SHOWN DIMENSIONS DO NOT SCALE DRAWING



- NOTE:**
- Material and finish**
 Outer shell&Back nut: Copper alloy, Cr plating
 Contact: Copper alloy, Gold plating over Ni
 Insulator: PEEK UL94 V-1
 Gasket: Silicone
 Other parts: Copper alloy, Ni plating
 - Mechanical characteristics**
 Insertion Force: 40.0N MAX.
 Extraction Force: 40.0N MAX.
 Back nut torque: 2.0 N·m MAX.
 Endurance: 3000 mating cycles
 Vibration: 10-2000Hz , 15g comply with EIA-364-28
 Shock: 100g amplitude, half sine pulse of 3ms, no discontinuity > 1us EIA-364-27
 - Electrical specifications**
 Contact resistance: 8.7 mOhm MAX.
 After 3000 Cycles: 10 mOhm MAX.
 Insulation resistance: >100 Mohm
 Rated current: 2PIN 25.0A (Per Pin) 3PIN 17.0A (Per Pin)
 4PIN 15.0A (Per Pin) 5PIN 14.0A (Per Pin)
 6PIN 12.0A (Per Pin) 7PIN 11.0A (Per Pin)
 8PIN 10.0A (Per Pin) 10PIN 8.0A (Per Pin)
 12PIN 7.0A (Per Pin) 14PIN 6.5A (Per Pin)
 16PIN 6.0A (Per Pin) 18PIN 5.5A (Per Pin)
 19PIN 5.0A (Per Pin) 26PIN 2.0A (Per Pin)
 32PIN 1.5A (Per Pin)
 - Characteristics**
 Waterproof level: IP67 (Mating)
 Operating temperature: -55°C ~ + 200°C
 Corrosion resistance: 144 H salt mist, 5 % salt solution, 35°C
 Humidity: 21 days at 95% RH
 - Max wire size (AWG) :** #16 for 2pin #18 for 3pin
 #20 for 4~7pin #22 for 8&10pin
 #24 for 12~19pin #28 for 26&32pin
 - RoHS compliance**
 Part No.

△X0.3 R - F 2 T S * * 0 * C 2 * * *

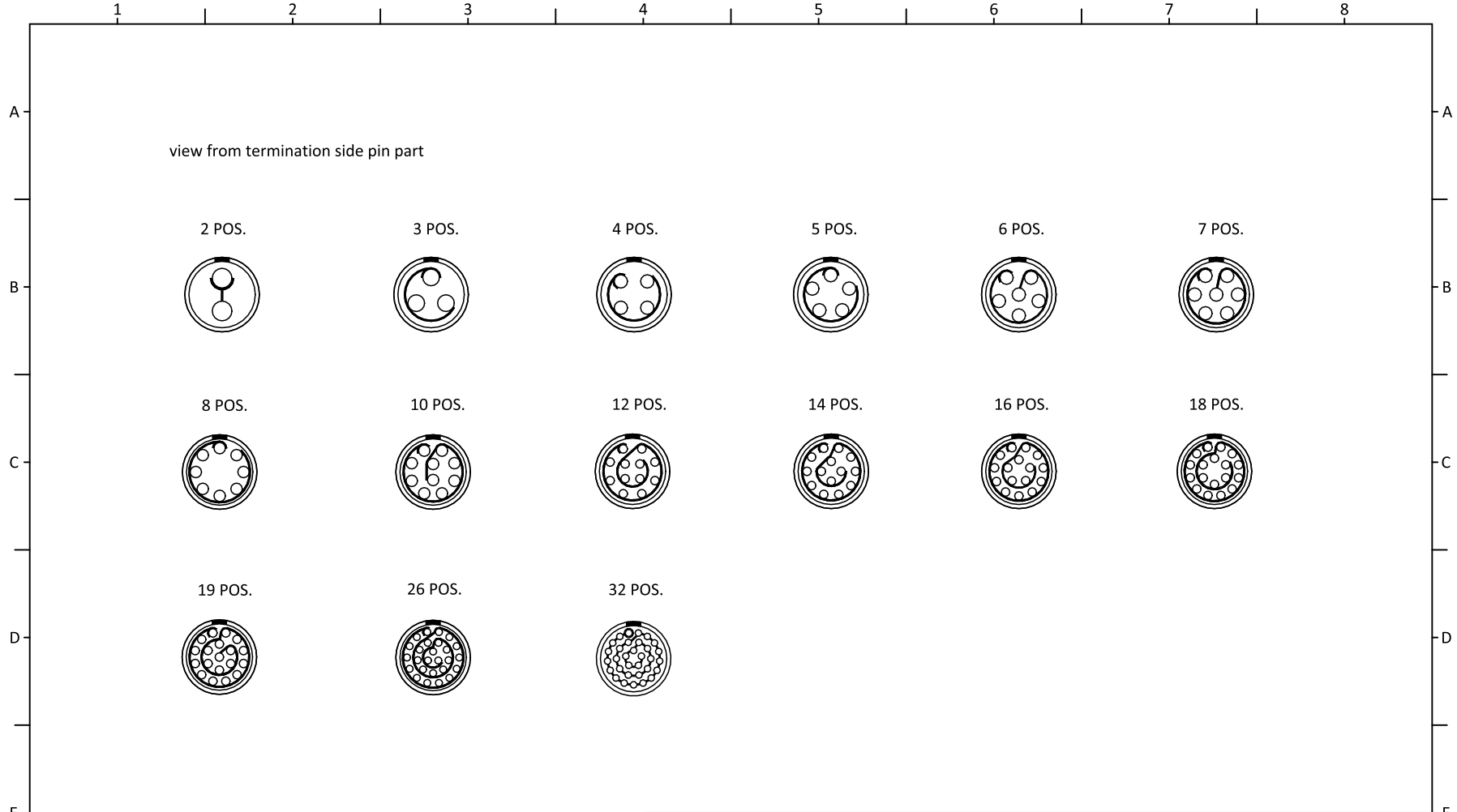
CONTACT POS. 02-32=2pin-32pin	CABLE OD 15=OD: 1.3mm-1.5mm 20=OD: 1.6mm-2.0mm 25=OD: 2.1mm-2.5mm 30=OD: 2.6mm-3.0mm 35=OD: 3.1mm-3.5mm 40=OD: 3.6mm-4.0mm 45=OD: 4.1mm-4.5mm 50=OD: 4.6mm-5.0mm 55=OD: 5.1mm-5.5mm 60=OD: 5.6mm-6.0mm 65=OD: 6.1mm-6.5mm 70=OD: 6.6mm-7.0mm 75=OD: 7.1mm-7.5mm 80=OD: 7.6mm-8.0mm 85=OD: 8.1mm-8.5mm
SHELL MATERIAL 0=Brass	
CODE CONTACT TYPE	
2 Male Solder Contact	
4 Female Solder Contact	
C Crimp Male Contact	
M Crimp Female Contact	
COLLET NUT 2=Nut for standard	
CODE KEY ANGLES	
0 0°	
A 30°	
* **	



UNITS: <input checked="" type="checkbox"/> mm <input type="checkbox"/> inch	SIZE A3	NAME: Metal Snap Latch T Series Connector, 2T Plug	 NEXTRONICS ENGINEERING CORP.
TOLERANCE LEVEL (UNLESS OTHERWISE SPECIFIED)	A	PART NO: R-F2TS**0*C2***	
A (ISO2768-m)	B	APPD: Ken張永 2025/06/26	DWG NO: 010-0000-T20 C
RANGE mm	DEFINED TOLERANCE	CHKD: Bosco彭劍劍 2025/06/26	SCALE SHEET REV.
0 ~ 6 ± 0.1 .X ± ***		DRAW: Ming呂銘凌 2025/06/26	2/1 2/4 X03
6 ~ 30 ± 0.2 .XX ± ***		DESIGN: Jiaze林嘉澤 2025/06/25	
30 ~ 120 ± 0.3 .XXX ± ***			
120 ~ 400 ± 0.5			
REV.	DESCRIPTION	DATE	
X03	Revise part number	2025/06/25	
X02	UPDATE PART NO. AND WIRE SIZE	2021/05/28	

CONFIDENTIAL: THIS DOCUMENT CONTAINED THE INFORMATION IS PROPRIETARY AND CONFIDENTIAL TO Nexttronics Engineering Corp. NO PERSON IS ALLOWED TO USE COPY, PUBLISH OR OTHERWISE DISCLOSE THE INFORMATION TO OTHERS, UNLESS BY THE PRIOR WRITTEN EXPRESS AUTHORIZATION OF Nexttronics Engineering Corp. (C)COPYRIGHT- Nexttronics Engineering Corp.

USE SHOWN DIMENSIONS DO NOT SCALE DRAWING



REV.	DESCRIPTION	DATE
X03	Revise part number	2025/06/25
X02	UPDATE PART NO. AND WIRE SIZE	2021/05/28

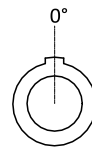
UNITS: <input checked="" type="checkbox"/> mm <input type="checkbox"/> inch	SIZE A3	NAME: Metal Snap Latch T Series Connector, 2T Plug
TOLERANCE LEVEL (UNLESS OTHERWISE SPECIFIED)		A
A (ISO2768-m)		B
RANGE	mm	DEFINED TOLERANCE
0 ~ 6	± 0.1	.X ± ***
6 ~ 30	± 0.2	.XX ± ***
30 ~ 120	± 0.3	.XXX ± ***
120 ~ 400	± 0.5	ANGLE X° ± 1°
ANGLE	X° ± 1°	ANGLE X° ± **
PART NO: R-F2TS**0*C****		APPD: Ken張永 2025/06/26
CHKD: Bosco彭劍劍 2025/06/26		DRAW: Ming呂銘凌 2025/06/26
DESIGN: Jiaze林嘉澤 2025/06/25		

nexttron NEXTRONICS ENGINEERING CORP.		
TITLE: CUSTOMER DWG.		
DWG NO: 010-0000-T20	C	
SCALE: 2/1	SHEET: 3/4	REV: X03

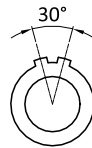
CONFIDENTIAL: THIS DOCUMENT CONTAINED THE INFORMATION IS PROPRIETARY AND CONFIDENTIAL TO Nexttronics Engineering Corp. NO PERSON IS ALLOWED TO USE COPY, PUBLISH OR OTHERWISE DISCLOSE THE INFORMATION TO OTHERS, UNLESS BY THE PRIOR WRITTEN EXPRESS AUTHORIZATION OF Nexttronics Engineering Corp. (C)COPYRIGHT- Nexttronics Engineering Corp.

USE SHOWN DIMENSIONS DO NOT SCALE DRAWING

KEY ANGLES (PLUG FRONT VIEW):



O



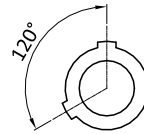
A



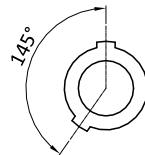
D



B



K



U



H



C



REV.	DESCRIPTION	DATE
X03	Revise part number	2025/06/25
X02	UPDATE PART NO. AND WIRE SIZE	2021/05/28

UNITS: <input checked="" type="checkbox"/> mm <input type="checkbox"/> inch	SIZE A3	NAME: Metal Snap Latch T Series Connector, 2T Plug
TOLERANCE LEVEL (UNLESS OTHERWISE SPECIFIED)		A
A (ISO2768-m)		B
RANGE	mm	DEFINED TOLERANCE
0 ~ 6	± 0.1	.X ± ***
6 ~ 30	± 0.2	.XX ± ***
30 ~ 120	± 0.3	.XXX ± ***
120 ~ 400	± 0.5	XXX ± ***
ANGLE	X° ± 1°	ANGLE X° ± **
PART NO:	R-F2TS**0*C****	
APPD:	Ken張永	2025/06/26
CHKD:	Bosco彭劍劍	2025/06/26
DRAW:	Ming呂銘凌	2025/06/26
DESIGN:	Jiaze林嘉澤	2025/06/25

 NEXTRONICS ENGINEERING CORP.	
TITLE: CUSTOMER DWG.	
DWG NO:	010-0000-T20
C	
SCALE	SHEET
2/1	4/4
REV.	X03

CONFIDENTIAL: THIS DOCUMENT CONTAINED THE INFORMATION IS PROPRIETARY AND CONFIDENTIAL TO Nexttronics Engineering Corp. NO PERSON IS ALLOWED TO USE COPY, PUBLISH OR OTHERWISE DISCLOSE THE INFORMATION TO OTHERS, UNLESS BY THE PRIOR WRITTEN EXPRESS AUTHORIZATION OF Nexttronics Engineering Corp. (C)COPYRIGHT- Nexttronics Engineering Corp.

USE SHOWN DIMENSIONS
DO NOT SCALE DRAWING