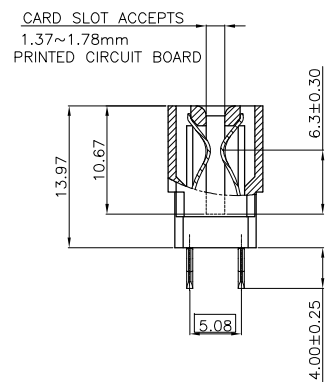


- NOTE:
- MATERIAL:
HOUSING-THERMAL PLASTIC UL94V-0,COLOR:BLACK.
CONTACTS:PHOSPHOR BRONZE.
 - CONTACT PLATING:
ALL AREA UNDERPLATED 50~100u" NICKEL
30u" GOLD ON THE CONTACT AREA,
40~80u" MATTE TIN ON THE PRESS-FIT AREA.
 - RECOMMENDED PCB FINISHED HOLE DIA:1.02±0.05mm.
THE PC BOARD THICKNESS: 2.0MM MIN.
 - CONNECTOR MARKED WITH PART NUMBER AND DATE CODE.
 - ROHS DIRECTIVE COMPLIANCE.
 - CHARACTERISTICS
1>CURRENT RATING: 3A MAX PER CONTACT FOR UL
2>.DIELECTRIC WITHSTANDING VOLTAGE: 1000V AC/MINUTE
3>.CONTACT RESISTANCE: 30mΩ max.
4>.INSULATION RESISTANCE: 5000 MΩ min.
 - MECHANICAL
1>.DURABILITY: 200 CYCLES.
2>.OPERATION TEMPERATURE: -55°C ~ +85°C

The "NEXTRON" Logo is on the opposite side

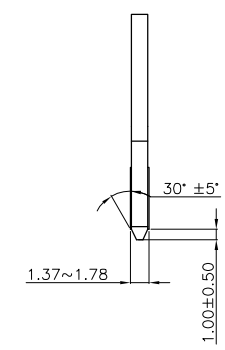
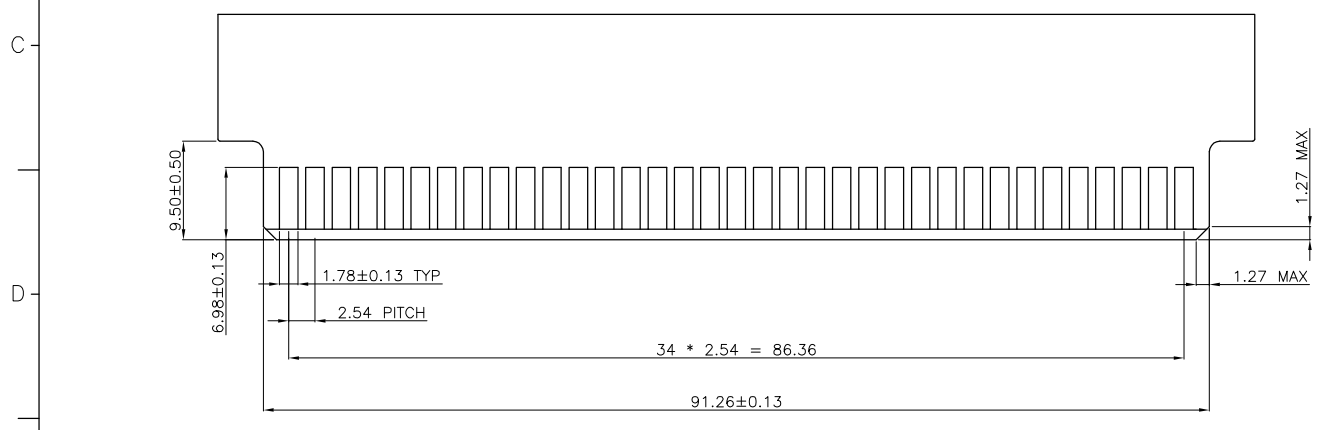
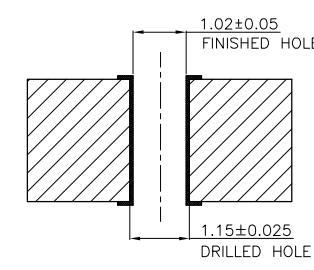
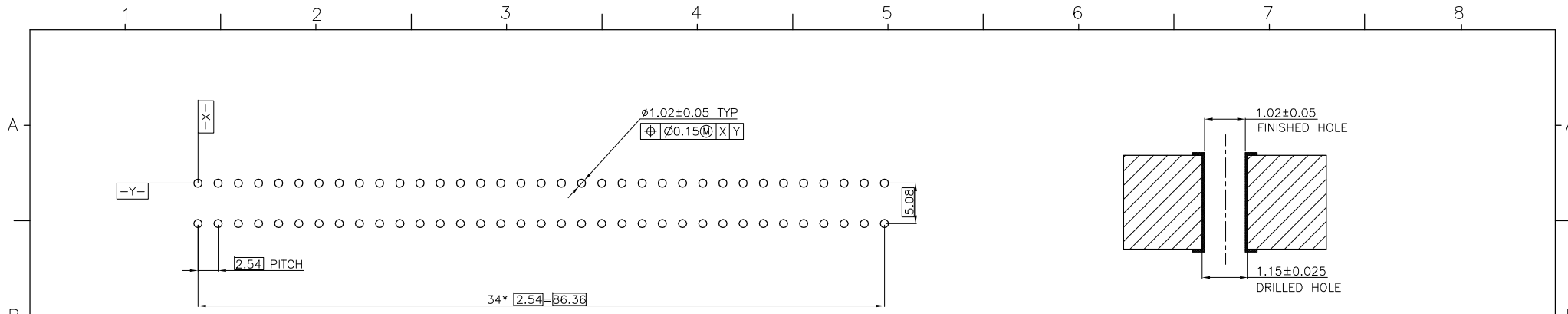


UNITS	
■ mm □ INCH	
GENERAL TOLERANCES: (UNLESS SPECIFIED)	
	mm INCH
4 PLACE	±*** ±.***
3 PLACE	±0.10 ±.***
2 PLACE	±0.15 ±.***
1 PLACE	±0.20 ±.***
ANGULAR:	X°±2° .X°±***

NAME: POWER EDGE CONNECTOR TYPE II 35Pos. PRESS-FIT	
PART NO: R-825F113135000	
APPD:	
CHKD:	
DRAWN: 賀秀秋 10/30,12	

nextron NEXTRONICS ENGINEERING CORP.	
TITLE: CUSTOMER DWG.	
DWG NO: 010-0000-804	
SCALE: 2:1	SHEET: 1/2
REV.: A	

A	ECN-210201	10/30,12	
X3	PITCH公差設變 $\Delta 3 = 1$	2/28,12	楊海文
X2	設計變更 $\Delta 2 = 3$	6/14,11	楊海文
REV.	DESCRIPTION	DATE	APPD



A	ECN-210201	10/30,12	
X3	PITCH公差設定 $\Delta 3 = 1$	2/28,12	楊海文
X2	設計變更 $\Delta 2 = 3$	6/14,11	楊海文
REV.	DESCRIPTION	DATE	APPD

UNITS	
■	mm □ INCH
GENERAL TOLERANCES: (UNLESS SPECIFIED)	
	mm
4 PLACE	±***
3 PLACE	±0.10
2 PLACE	±0.15
1 PLACE	±0.20
ANGULAR:	X° ± 2° .X° ± ***

NAME:	POWER EDGE CONNECTOR TYPE II 35Pos. PRESS-FIT
PART NO:	R-825F113135000
APPD:	
CHKD:	
DRAWN:	賀秀秋 10/30,12

NEXTRONICS ENGINEERING CORP.	
TITLE: CUSTOMER DWG.	
DWG NO:	010-0000-804
SCALE:	2:1
SHEET:	2/2
REV.:	A